

TECH TIPS

Service Call:

Serial plate/stamp location

Tools Needed:

Model:

S40-S125 & Z60-Z135



Tech Tips Safety Rules



Danger

Failure to obey the instructions and safety rules in the appropriate Operator's Manual and Service Manual for your machine will result in death or serious injury. Many of the hazards identified in the operator's manual are also safety hazards when maintenance and repair procedures are performed.

Do Not Perform Maintenance Unless:

- You are trained and qualified to perform maintenance on this machine.
- You read, understand and obey:
 - manufacturer's instructions and safety rules
 - employer's safety rules and worksite regulations
 - applicable governmental regulations
- You have the appropriate tools, lifting equipment and a suitable workshop.

The information contained in this tech tip is a supplement to the service manual. Consult the appropriate service manual of your machine for safety rules and hazards.

Step 1

S40-S85

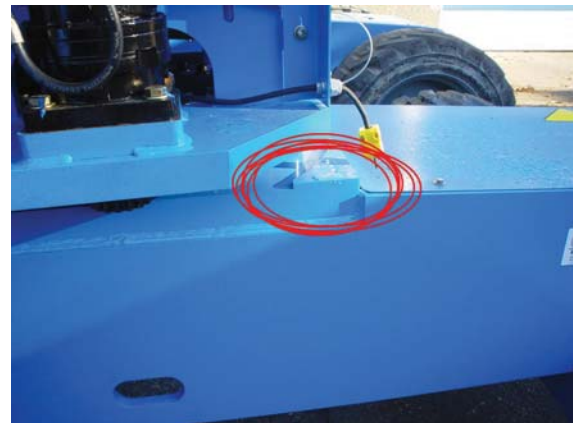
The serial plate is located on the control box side above the swing motor.



Step 2

S40-S85

The chassis stamp is located on the swing bearing at either side (L/R and R/F of plate).



Step 3

S60-65

The serial plate is located above the battery.

The serial stamp is located on the bearing at either side (L/R and R/F of plate).



Step 4

S100-S125

Serial plate is located on the control box side on the rear baffle.

The chassis stamp is located on the swing bearing plate.

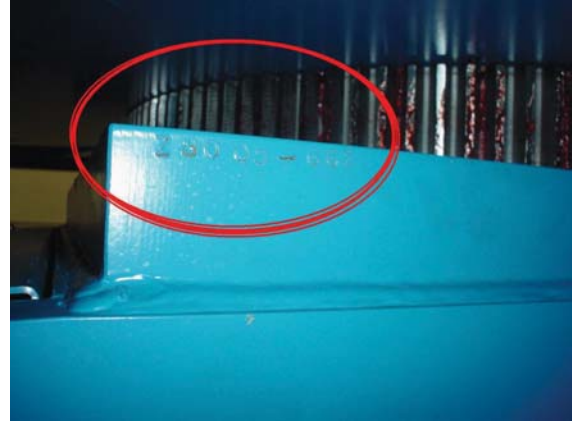


Step 5

Z60-Z80

Early Z60's had the stamp on the swing lock weldment.

All others Z-60's and the Z80's are on the left and the right side of the bearing plate at the F/L corner and the R/R corner of the plate.



Step 6

Z60-Z80

Serial plates are located between the hydraulic and fuel tanks



Step 7

Z135

The chassis stamp is in the center of the bearing plate on either side.

The serial plate is located next to the hydraulic tank.

