

TECH TIPS

Service Call:

**No start from platform for all units
utilizing ALC500**

Tools Needed:

7/16 end wrench
Digital volt meter

Model:

All ALC500 Systems



Tech Tips Safety Rules



Danger

Failure to obey the instructions and safety rules in the appropriate Operator's Manual and Service Manual for your machine will result in death or serious injury. Many of the hazards identified in the operator's manual are also safety hazards when maintenance and repair procedures are performed.

Do Not Perform Maintenance Unless:

- You are trained and qualified to perform maintenance on this machine.
- You read, understand and obey:
 - manufacturer's instructions and safety rules
 - employer's safety rules and worksite regulations
 - applicable governmental regulations
- You have the appropriate tools, lifting equipment and a suitable workshop.

The information contained in this tech tip is a supplement to the service manual. Consult the appropriate service manual of your machine for safety rules and hazards.

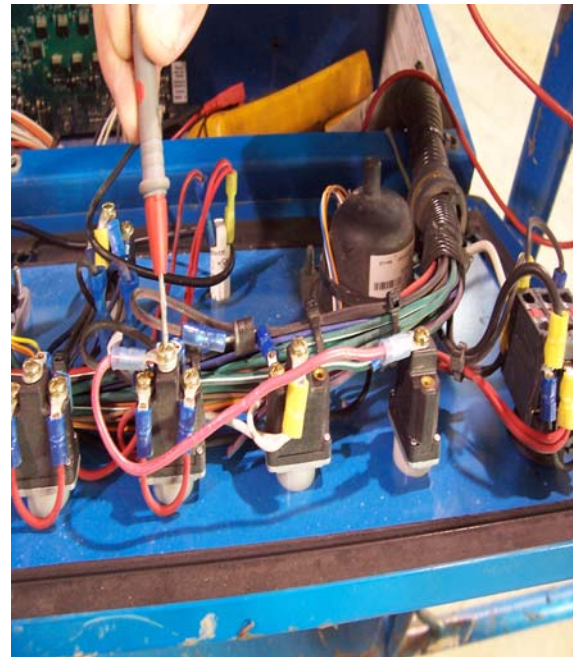
Step 1

Open platform control box using 7/16 wrench



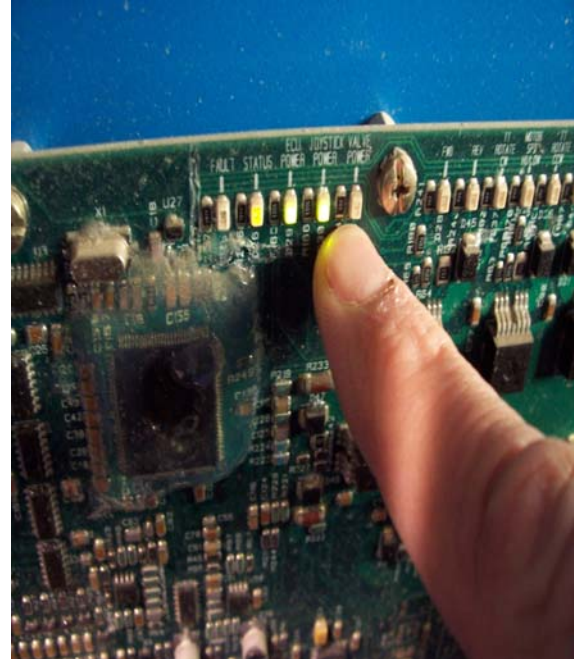
Step 2

Check start toggle switch center post for 12 vdc



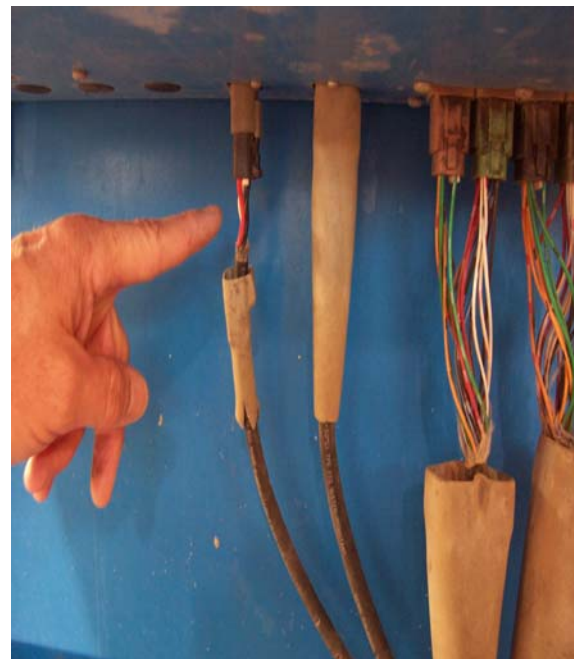
Step 3

Check for light on valve power on ALC 500 board. Light should be off unless footswitch is depressed



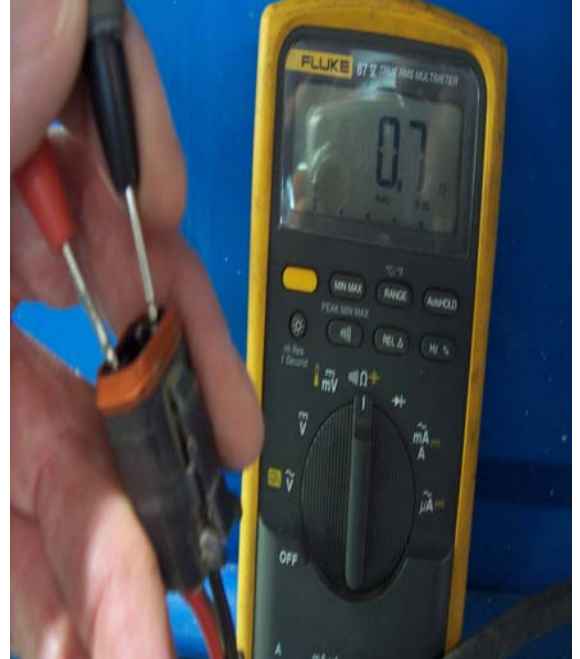
Step 4

Locate footswitch cable under platform box



Step 5

Ohm out cable with foot off footswitch. Red to black should be 0.7 ohms or less



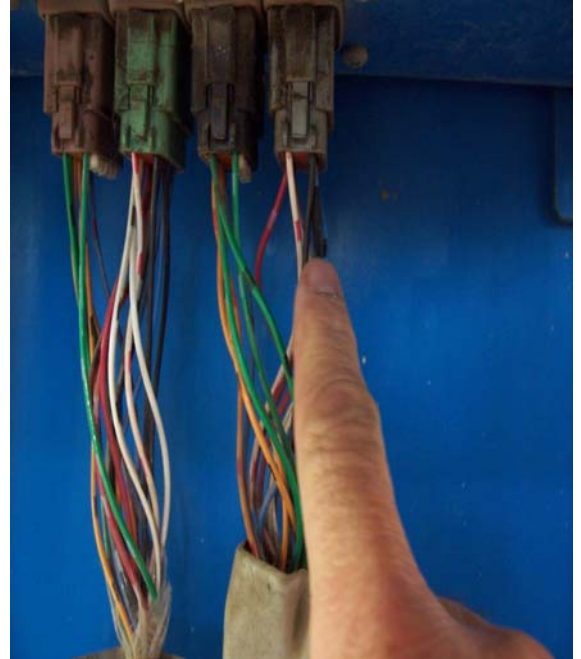
Step 6

Red to white wire should be open



Step 7

Locate black wire on pin 7 on gray connector and check for 12 vdc while activating start toggle switch



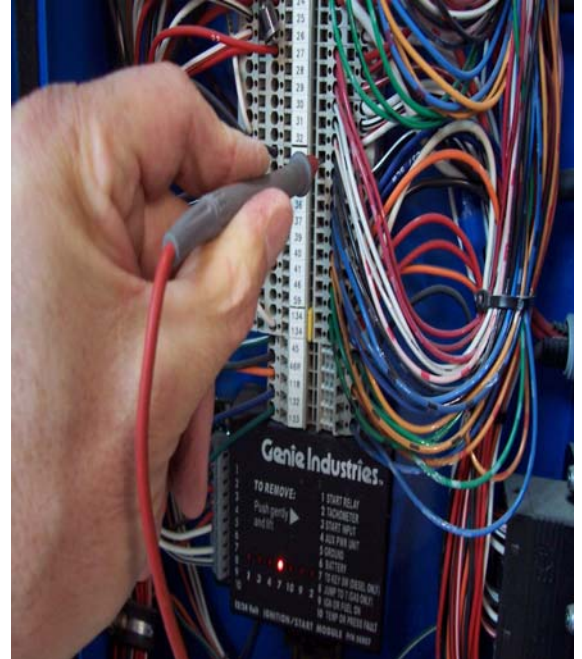
Step 8

open ground control box using 7/16 wrench



Step 9

check for 12 vdc on terminal 33 while activating start switch at platform with assistance from another technician.



Step 10

If you don't see 12 vdc while operating start toggle switch from platform, check for open in 18/19 harness in cable track. If you need further assistance please call the Genie Industries service department at 1-800-536-1800