

TECH TIPS

Service Call:

Generators: T25-T360 with cascade controller

Unit shuts down after running for several minutes and AUX 1 light is flashing.

Tools Needed:

None

Model:

T25-T360



Tech Tips Safety Rules



Danger

Failure to obey the instructions and safety rules in the appropriate Operator's Manual and Service Manual for your machine will result in death or serious injury. Many of the hazards identified in the operator's manual are also safety hazards when maintenance and repair procedures are performed.

Do Not Perform Maintenance Unless:

- You are trained and qualified to perform maintenance on this machine.
- You read, understand and obey:
 - manufacturer's instructions and safety rules
 - employer's safety rules and worksite regulations
 - applicable governmental regulations
- You have the appropriate tools, lifting equipment and a suitable workshop.

The information contained in this tech tip is a supplement to the service manual. Consult the appropriate service manual of your machine for safety rules and hazards.

Step 1

Caution: The engine should not be running while performing these tests.

Open engine door and check that low coolant sensor on the back edge of the radiator is connected. If it is not, connect it and restart engine to see if AUX 1 light turns off. If connected, proceed to step 2.



Step 2

Unscrew black radiator fill cover located on the top of the unit. Proceed to step 3



Step 3

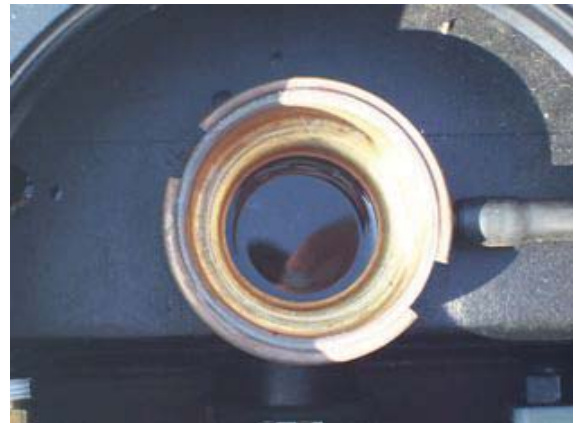
Caution: Never remove radiator cap while engine is running or while engine is hot.

Carefully unscrew radiator cap and proceed to step 4.



Step 4

Check that coolant level is no lower 1 inch from the top. If it is below that, slowly add 50/50 coolant allowing any air bubbles to dissipate. Once the tank is full, replace radiator cap and radiator fill cover and proceed to step 5.



Step 5

Re-start unit and see if AUX 1 light has turned off. If it the light is still flashing please contact Genie Service at 1-800-536-1800.