

Specifications

| Models | Z-51/30J RT | |
|------------------------------------|-------------|-------------|
| Measurements | Metric | US |
| Working height maximum* | 17.59 m | 57 ft 8 in |
| Platform height maximum | 15.59 m | 51 ft 2 in |
| Horizontal reach maximum | 9.37 m | 30 ft 9 in |
| Up-and-over clearance maximum | 7.39 m | 24 ft 3 in |
| A Platform length | 0.76 m | 2 ft 6 in |
| B Platform width | 1.83 m | 6 ft |
| C Height - stowed | 2.13 m | 7 ft |
| D Length - stowed | 7.58 m | 24 ft 11 in |
| E Width | 2.29 m | 7 ft 6 in |
| F Wheelbase | 2.03 m | 6 ft 8 in |
| G Ground clearance - centre | 0.375 m | 1 ft 3 in |

Productivity

| | | |
|--------------------------------|------------------------|------------|
| Lift capacity | 227 kg | 500 lbs |
| Platform rotation | 160° | 160° |
| Vertical jib rotation | 135° (+78°/-57°) | |
| Turntable rotation | 355° non-continuous | |
| Turntable tailswing | zero | zero |
| Drive speed - stowed | 8 km/h | 5 mph |
| Drive speed - raised** | 1 km/h | 0.61 mph |
| Gradeability - 4WD - stowed*** | 45% | 45% |
| Turning radius - inside | 1.68 m | 5 ft 6 in |
| Turning radius - outside | 4.50 m | 14 ft 9 in |
| Controls | 12 V DC proportional | |
| Tyres | 315/55 D20 foam filled | |

Power

| | | |
|-------------------------|--|---------|
| Power source | Deutz D2011 L03i 3 cylinder diesel 35.8 kW (48 hp) | |
| Auxiliary power unit | 12 V DC | 12 V DC |
| Hydraulic tank capacity | 90.9 L | 24 gal |
| Fuel tank capacity | 64.4 L | 17 gal |

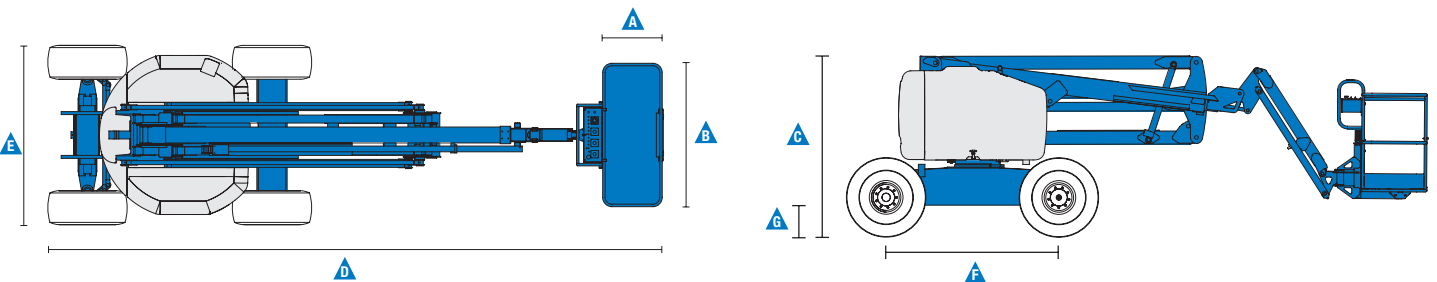
Sound & Vibration Levels

| | | |
|---|-----------------------|---------------------------|
| Sound pressure level (ground workstation) | 86 dBA | 86 dBA |
| Sound pressure level (platform workstation) | 79 dBA | 79 dBA |
| Vibration | <2.5 m/s ² | <8 ft 2 in/s ² |

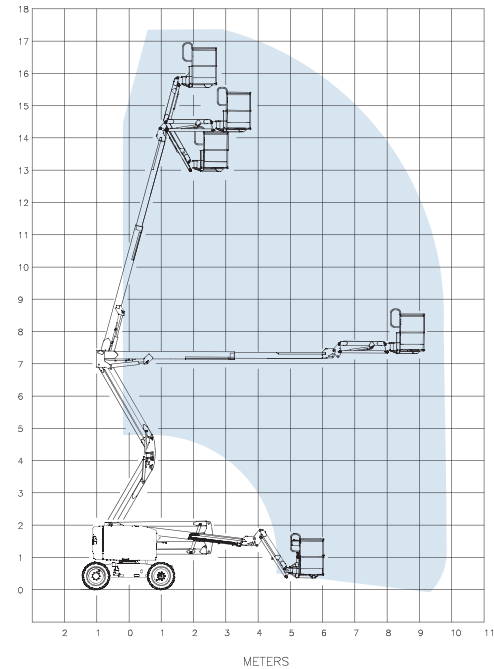
Weight****

| | |
|----------|------------|
| 7,394 kg | 16,300 lbs |
|----------|------------|

Standards Compliance EU Directives: 2006/42/EC - Machinery (harmonized standard EN280); 2004/108/EC (EMC); 2000/14/EC (Outdoor Noise)



Range Of Motion Z-51/30J RT



* The metric equivalent of working height adds 2 m to platform height. U.S. adds 6 ft to platform height.
 ** In lift mode (platform raised), the machine is designed to operate on firm, level surfaces only.
 *** Gradeability applies to driving on slopes. See Operator's Manual for details regarding slope ratings.
 **** Weight will vary depending on options and/or country standards.

Features

| Standard Features | Easily Configured To Meet Your Needs | Options & Accessories |
|-------------------|--------------------------------------|-----------------------|
|-------------------|--------------------------------------|-----------------------|

Measurements

Z-51/30J RT

- 17.59 m (57 ft 8 in) working height
- 9.37 m (30 ft 9 in) horizontal reach
- 7.39 m (24 ft 3 in) up and over clearance
- Up to 227 kg (500 lbs) lift capacity

Productivity

- Self-levelling platform
- Proportional joystick controls
- Telematics-Ready Connector
- Thumb rocker steering
- Drive enable
- Chassis tilt drive function cut-out
- AC power cord to platform
- Horn
- Hour meter
- Tilt alarm
- Descent & travel alarms
- Flashing beacon
- 355° non-continuous turntable rotation
- Positive traction drive
- Two speed wheel motors
- Hydraulic oil cooler
- Dual parallelogram for vertical wall tracking
- Zero Tailswing
- Lift Guard™ Contact Alarm

Power

- 12 V DC auxiliary power
- Engine protection package
- Deutz intake air heater

Platform

- Steel 1.83 m (6 ft) dual entry with side swing gate

Jib

- Articulating 1.52 m (5 ft) jib boom

Power

- Deutz diesel 35.8 kW (48 hp)

Drive

- 4 x 4

Axle

- Active oscillation (standard)

Tyre Options

- Rough terrain foam-filled (standard)
- Rough terrain non-marking foam filled

Productivity

- Half mesh platform
- Platform auxiliary top rail
- Air line to platform
- Power to platform: plug, socket, with optional Residual-current Circuit Breaker with Overcurrent protection
- Work lights package (2 on chassis, 2 on platform) ⁽¹⁾
- Biodegradable hydraulic oil
- Chassis tilt lift function cut-out (software setting)
- Track & Trace ⁽²⁾ (GPS unit providing machine location & operating information)
- Lockable platform control box cover
- Operator Protective Structure⁽³⁾
- Tool Tray ⁽³⁾
- Fall Arrest Bar⁽³⁾

Power

- Diesel catalytic scrubber
- Engine gauge package (oil pressure & temperature and voltage) ⁽¹⁾
- AC generator packages (110V/60Hz - 220V/50Hz, 2200W, hydraulically driven)
- Low temperature cut-out module
- EMEAR Cold Start kit: Inc. Engine heater & battery charger



⁽¹⁾ Factory-fit option only
⁽²⁾ Includes a first 2 years subscription
⁽³⁾ Aftermarket only

United Kingdom and MESART

The Maltings, Wharf Road, Grantham NG31 6BH, T: +44 800 988 3739 (toll free), Fax +44 (0)1476 584334, Email AWP-InfoEurope@terex.com
 Middle East, Southern Africa, Russia and Turkey, T: +971 4 399 0381, Email AWP-InfoME@terex.com
 Visit www.genielift.com/en-gb/about-genie/locations to view our global locations list.

Worldwide Manufacturing And Distribution

Australia · Brazil · Caribbean · Central America · China · France · Germany · Italy · Japan · Korea · Mexico · Russia · Southeast Asia · Spain · Sweden · United Arab Emirates · United Kingdom · United States

Product specifications and prices are subject to change without notice or obligation. The photographs and/or drawings in this document are for illustrative purposes only. Refer to the appropriate Operator's Manual for instructions on the proper use of this equipment. Failure to follow the appropriate Operator's Manual when using our equipment or to otherwise act irresponsibly may result in serious injury or death. The only warranty applicable to our equipment is the standard written warranty applicable to the particular product and sale and we make no other warranty, express or implied. Products and services listed may be trademarks, service marks or trade names of Terex Corporation and/or their subsidiaries in the USA and many other countries. Genie is a registered trademark of Terex South Dakota, Inc. © 2019 Terex Corporation.

