

Genie® Z[®]-34/22 DC

Specifications

| Models | Z-34/22 DC |
|------------------------------------|------------|
| Working height max. ⁽¹⁾ | 12.52m |
| Platform height max. | 10.52m |
| Horizontal reach max. | 6.78m |
| Up and over clearance max. | 4.57m |
| A Platform length | 0.76m |
| B Platform width | 1.42m |
| C Height - stowed (tires) | 2.00m |
| D Length - stowed (tires) | 5.64m |
| E Storage height | 2.26m |
| F Storage length | 4.08m |
| G Width | 1.73m |
| H Wheelbase | 1.88m |
| I Ground clearance - center | 0.15m |

Productivity

| | |
|---|--------------------|
| Lift capacity max. - unrestricted | 227 kg |
| Platform rotation | 180° |
| Jib length | 1.22m |
| Vertical jib rotation | 139° |
| Turntable rotation | 355° |
| Turntable tailswing | 0 cm |
| Drive speed - stowed ⁽²⁾ | 6.4 km/h |
| Drive speed - raised | 1.1 km/h |
| Gradeability - stowed ⁽²⁾ | 30% |
| Tilt sensor activation (front to back/side to side) | 2.5° - 4.5° / 4.5° |
| Turning radius - inside/outside | 1.75m / 4.0m |
| Tires (solid, non-marking) | 23×37 cm |

Power

| | |
|-------------------------|---------------------|
| Power | 48V DC (8×6V 315Ah) |
| Auxiliary power unit | 24V DC |
| Hydraulic tank capacity | 15.1 L |

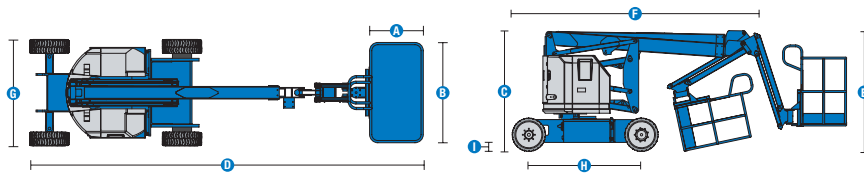
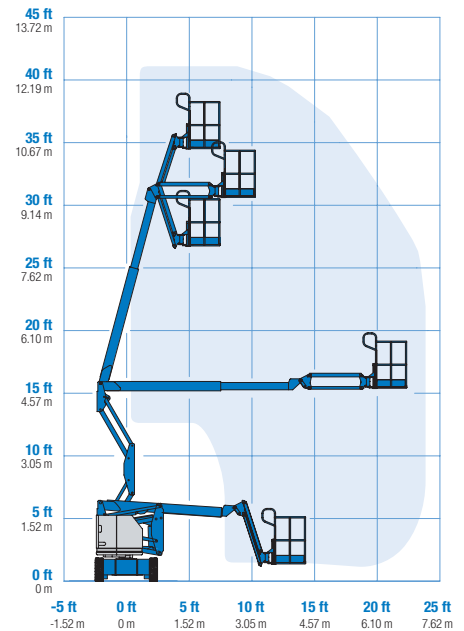
Weight⁽³⁾ and Floor Loading⁽⁴⁾

| | |
|---------------------------------|-----------|
| Weight (tires) | 5,180 kg |
| Tire contact pressure | 689 kPa |
| Occupied floor pressure (tires) | 11.44 kPa |

Sound and Vibration Levels

| | |
|---|----------------------|
| Sound Pressure level (ground workstation) | < 70 dBA |
| Sound Pressure level (platform workstation) | < 70 dBA |
| Vibrations | 2.5 m/s ² |

Range of motion Z-34/22 DC



(1) The metric equivalent of working height adds 2m to platform height. The imperial equivalent adds 6ft to platform height.

(2) Gradeability applies to driving on slopes and may vary depending on options and machine configurations. See operator's manual for details regarding slope ratings.

(3) Weight refers to standard configuration and may vary depending on options and/or country standards.

(4) Floor loading information is approximate and may vary depending on options and machine configurations. It should be used only with adequate safety factors.

Genie® Z[®]-34/22 DC

SKU: Standard Model

- Z-34/22 DC, DC Power, 2WD*

* Build to Order

| Option availability | | S | S+ | BtO |
|---|---|---|----|-----|
| Power | Standard FLA flooded lead acid battery | | | ✓ |
| | AGM Maintenance-free batteries | | | ○ |
| | Battery charge indicator (BCI) | | | ○ |
| | Low voltage interrupt (LVI) with battery charge indicator (BCI) | | | ○ |
| Platform | 3ft 10in/1.17m steel platform | | | ○ |
| | 4ft 8in/1.42m steel platform | | | ✓ |
| | Air line to platform | | | ○ |
| | Control box covers | | | ○ |
| | Light Package: drive and work lights | | | ○ |
| | Platform swing gate | | | ○ |
| | 4ft/1.2m Jib | | | ✓ |
| | AC Power cord to platform | | | ✓ |
| | Drive enable system | | | ✓ |
| | Horn | | | ✓ |
| | Lift Guard Contact Alarm | | | ✓ |
| | Platform load sense system | | | ✓ |
| | Proportional controls | | | ✓ |
| | Self-leveling platform | | | ✓ |
| Travel alarm package: flashing beacons, descent, travel and tilt alarms | | | ✓ | |
| Chassis | Lift Connect Telematics | | | ○ |
| | Lift Connect with Access Manager upgrade | | | ○ |
| | Industrial, foam-filled tires | | | ✓ |
| | Hostile environment kit | | | ○ |
| | Chassis tilt drive function cut-out | | | ✓ |
| | Dual parallelogram lift linkage | | | ✓ |
| | Hour meter | | | ✓ |

- S Standard
- S+ Standard +
- BtO Build to Order
- ✓ Standard Features
- Options



Quiet Operation



Zero Tailswing



Dual Parallel Linkage



Genie Genuine Accessories⁽¹⁾

- Lift Tools Productivity Tools
- Tech Pro Link Handheld Device

(1) More accessories available from Genie Genuine Parts.

Product specifications are subject to change without notice or obligation. Photographs and/or drawings herein are for illustrative purposes only. Refer to the appropriate Operator's Manual for instructions on proper equipment use. Failure to follow instructions in the Operator's Manual may result in serious injury or death. The only warranty applicable to our equipment is the standard written warranty applicable to the particular product and sale and we make no other warranty, express or implied. Products and services listed may be trademarks, service marks or trade names of Terex Corporation and/or their subsidiaries in the USA and many other countries. Terex, Genie, Quality By Design, Xtra Capacity, Lift Power, Lift Guard, Lift Tools, Lift Connect and Tech Pro Link are registered trademarks of Terex Corporation or its subsidiaries.

04/22