

Specifications

| Models | Z-34/22 DC | |
|------------------------------------|------------|---------|
| Measurements | US | Metric |
| Working height maximum* | 40 ft 6 in | 12.52 m |
| Platform height maximum | 34 ft 6 in | 10.52 m |
| Horizontal reach maximum | 22 ft 3 in | 6.78 m |
| Up and over clearance maximum | 15 ft | 4.57 m |
| A Platform length | 2 ft 6 in | 0.76 m |
| B Platform width | 4 ft 8 in | 1.42 m |
| C Height - stowed | 6 ft 7 in | 2.00 m |
| D Length - stowed | 18 ft 6 in | 5.64 m |
| E Storage height | 7 ft 5 in | 2.26 m |
| A Storage length | 13 ft 5 in | 4.08 m |
| A Width | 5 ft 8 in | 1.73 m |
| A Wheelbase | 6 ft 2 in | 1.88 m |
| A Ground clearance - center | 6 in | 0.15 m |

Productivity

| | | |
|--------------------------|--|----------|
| Lift capacity | 500 lb | 227 kg |
| Platform rotation | 180° | |
| Vertical jib rotation | 139° | |
| Turntable rotation | 355° non-continuous | |
| Turntable tailswing | zero | |
| Drive speed - stowed | 4.0 mph | 6.4 km/h |
| Drive speed - raised** | .68 mph | 1.1 km/h |
| Gradeability - stowed*** | 30% | |
| Tilt sensor activation | front to back: 2.5° and side to side: 4.5° | |
| Turning radius - inside | 5 ft 9 in | 1.75 m |
| Turning radius - outside | 13 ft 1 in | 4 m |
| Controls | 24V DC proportional / 2 speed | |
| Tires - air filled | 9 x 14.5 in | |

Power

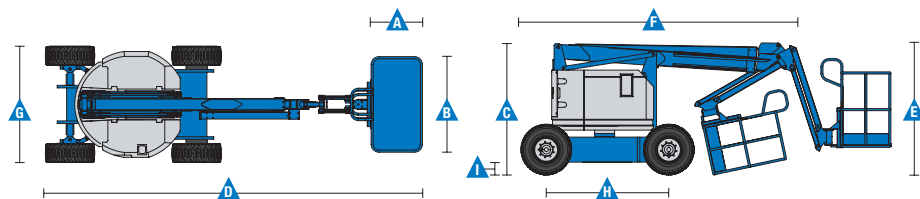
| | | |
|-------------------------|--|--------|
| Power Source | 48V DC (eight 6 V batteries 315 Ah capacity) | |
| Auxiliary Power Unit | 24V DC | |
| Hydraulic Tank Capacity | 4 gal | 15.1 L |
| Fuel Tank Capacity | _____ | _____ |

Weight****

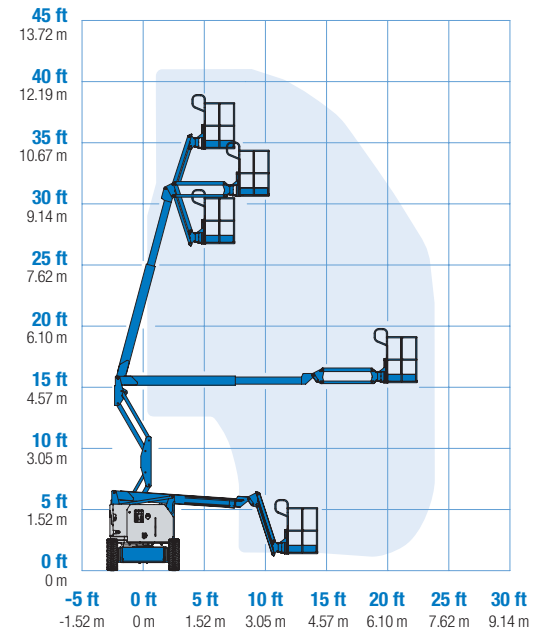
| | | |
|--|-----------|----------|
| | 11,420 lb | 5,180 kg |
|--|-----------|----------|

Standards Compliance

ANSI A92.20, CSA B354.6, EN 280, AS 1418.10



Range Of Motion Z-34/22 DC



* The metric equivalent of working height adds 2 m to platform height. U.S. adds 6 ft to platform height.

** In lift mode *(platform raised), the machine is designed to operate on firm, level surfaces only.

*** Gradeability applies to driving on slopes. See operator's manual for details regarding slope ratings.

**** Weight will vary depending on options and/or country standards.

Features

Standard Features

Measurements

- 40 ft 6 in (12.52 m) working height
- 22 ft 3 in (6.78 m) horizontal reach
- 15 ft (4.57 m) up and over clearance
- Up to 500 lb (227 kg) lift capacity

Productivity

- 4 ft (1.22 m) jib boom with 139° working range
- Self-leveling platform
- Hydraulic platform rotation
- Proportional joystick controls
- Thumb rocker steer
- Drive enable
- AC power to platform
- Alarm package: flashing beacon and travel alarm
- Horn
- Hour meter
- Tilt alarm
- Descent alarm
- Zero tailswing
- 355° non-continuous turntable rotation
- Lift Guard™ Contact Alarm
- Dual parallelogram for vertical wall tracking
- Lift Connect™ Telematics
- Platform load sense

Power

- 48V deep cycle battery pack
- 24V DC auxiliary power
- Universal 30A battery smart charger

Easily Configured To Meet Your Needs

Platform Options

- Steel 4 ft 8 in (1.42 m) with sliding mid-rail (standard)
- Steel 3 ft 10 in (1.17 m) with sliding mid-rail

Jib

- 4 ft (1.22 m) jib boom

Power

- 48V DC power source

Drive

- 2WD

Tire Options

- Industrial foam-filled (standard)
- Industrial non-marking foam-filled

Options & Accessories

Productivity Options

- Platform swing gate
- Lift Guard Platform Mesh - Half
- Lift Guard Platform Mesh - Full
- Platform top auxiliary rail**
- Air line to platform
- Specialty hydraulic oil (Cold weather, fire resistant or biodegradable)
- Aircraft protection package*
- Hostile environment kit
- Light package
- Florescent tube caddy***
- Pipe cradle (pair)***

Power Options

- AGM batteries
- EE UL583 Fire Protection rating
- Battery charge indicator (BCI)
- Low voltage interrupt with BCI
- 800 watt 120 V AC power inverter



* Derates load capacity to 440lb. Not available with other platform options.

** Not available with swing gate or half height mesh

*** Available through aftermarket parts only

Genie United States

6464 185th Ave. NE
Redmond, WA 98052
Telephone +1 (425) 881-1800
Toll Free in USA/Canada +1 (800)-536-1800
Fax +1 (425) 883-3475

Distributed By: