

# Genie® Z®-80/60

## Specifications

Models	Z-80/60
Working height max.(1)	25.77 m
Platform height max.	23.77 m
Horizontal reach max.	18.29 m
Below ground reach	4.83 m
Up and over clearance max.	8.83 m
<b>A</b> Platform length (8 ft/6 ft)	0.91 m/0.76 m
<b>B</b> Platform width (8 ft/6 ft)	2.44 m/1.83 m
<b>C</b> Height - stowed	3.00 m
<b>D</b> Length - stowed	11.27 m
<b>D</b> Length - storage/transport (jib tucked under)	7.3 m
<b>E</b> Length - transport	11.27 m
<b>F</b> Width	2.49 m
<b>G</b> Wheelbase	2.85 m
<b>H</b> Ground clearance - center	0.30 m

## Productivity

Lift capacity max. - unrestricted	227 kg
Platform rotation	160°
Jib length	1.83 m
Vertical jib rotation	135°
Turntable rotation	360°
Drive speed - stowed <sup>(2)</sup>	4.83 km/h
Drive speed - raised	1.1 km/h
Gradeability - stowed <sup>(2)</sup>	30 %
Tilt sensor activation (front to back/side to side)	4.5° / 4.5°
Turning radius - inside/outside	4.42 m/7.47 m
Tires	18-625 NHS

## Power

Power	Diesel
Auxiliary power unit	12V DC
Hydraulic tank capacity	170 L
Fuel tank capacity	132 L

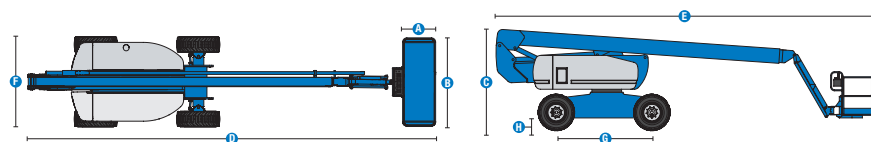
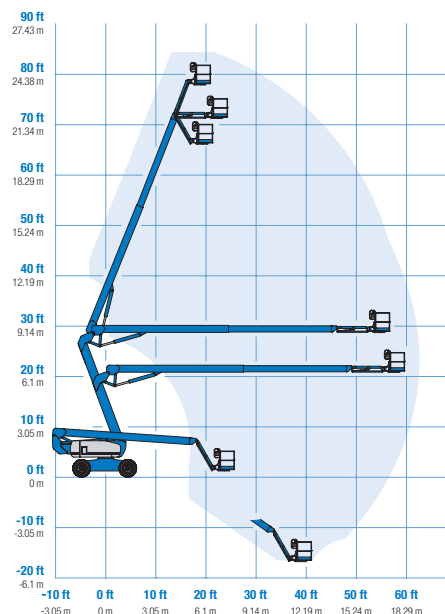
## Weight(3) and Floor Loading<sup>(4)</sup>

Weight, 2WS	17,010 kg
Weight, 4WS	17,237 kg
Tire contact pressure	896 kPa
Occupied floor pressure (tires)	18.05 kPa

## Sound and Vibration Levels

Sound Pressure level (ground workstation)	85 dBA
Sound Pressure level (platform workstation)	74 dBA
Vibrations	2.5 m/s <sup>2</sup>

## Range of motion Z-80/60



(1) The metric equivalent of working height adds 2 m to platform height. The imperial equivalent adds 6 ft to platform height.

(2) Gradeability applies to driving on slopes and may vary depending on options and machine configurations. See operator's manual for details regarding slope ratings.

(3) Weight refers to standard configuration and may vary depending on options and/or country standards.

(4) Floor loading information is approximate and may vary depending on options and machine configurations. It should be used only with adequate safety factors.

# Genie® Z®-80/60

## SKU: Standard Model

- Z-80/60, 4WD \*

\* Build to Order

Option availability		S	S+	BtO
Power	78 hp, 58 kW, Deutz BF4L2011, Turbo Diesel, T2			✓
	78 hp, 58 kW, Deutz TD2.9L, Turbo Diesel, T4f			○
	Cold weather package			○
	Diesel air intake pre-cleaner			○
	Diesel catalytic scrubber muffler (T4i/Stage IIIA)			○
	Positive air shutdown system			○
	Auto engine fault shutdown			✓
	Engine gauge display			✓
				✓
Platform	6ft/1.83m dual-entry platform with side swing gate			○
	8ft/2.44m tri-entry platform with side swing gate			✓
	Thumb rocker steering			✓
	Air line to platform			○
	Control box covers			○
	Lift Guard Full Mesh panels			○
	Lift Guard Half Mesh panels			○
	Light Package: drive and work lights			○
	Platform auxiliary top rail			○
	3kW AC Generator, 110V/60Hz			○
	3kW AC Generator, 220V/50Hz			○
	6ft/1.83m Jib			✓
	AC Power cord to platform			✓
	Alarm package: flashing beacons, descent, travel and tilt alarms			✓
	Drive enable system			✓
	Horn			✓
	Lift Guard Contact Alarm			✓
	Lift Guard Lanyard Alert			○
	Lift Guard Lanyard Alert Advanced			○
	Lift Tools Work Tray			✓
	Platform load sense system			✓
	Proportional controls			✓
	Self-leveling platform			✓
	Telescoping riser for up and over			✓
Chassis	Lift Connect Telematics			○
	Telematics-ready			✓
	Lift Connect with Access Manager upgrade			○
	Rough terrain, foam-filled tires			✓
	Rough terrain, foam-filled, non-marking tires			○
	2 wheel steering			✓
	4 wheel steering			○
	Chassis tilt lift and drive function cut-out			✓
	Deluxe hostile environment kit			○
	Hostile environment kit			○
	2 speed wheel motors			✓
	Active oscillating axle			✓
	Chassis tilt drive function cut-out			✓
	Hour meter			✓
	Hydraulic oil cooler			✓

Positive air shutdown Stage V engines only

- S Standard
- S+ Standard +
- BtO Build to Order
- ✓ Standard Features
- Options



Genie FastMast



3 Steering Modes



Outreach 60ft/18m



### Genie Genuine Accessories<sup>(1)</sup>

- Lift Tools Productivity Tools
- Tech Pro Link Handheld Device

(1) More accessories available from Genie Genuine Parts.

Product specifications are subject to change without notice or obligation. Photographs and/or drawings herein are for illustrative purposes only. Refer to the appropriate Operator's Manual for instructions on proper equipment use. Failure to follow instructions in the Operator's Manual may result in serious injury or death. The only warranty applicable to our equipment is the standard written warranty applicable to the particular product and sale and we make no other warranty, express or implied. Products and services listed may be trademarks, service marks or trade names of Terex Corporation and/or their subsidiaries in the USA and many other countries. Terex, Genie, Quality By Design, Xtra Capacity, Lift Power, Lift Guard, Lift Tools, Lift Connect and Tech Pro Link are registered trademarks of Terex Corporation or its subsidiaries.

01/26