

Genie® Z[®]-45/25J RT

Specifications

Models	Z-45/25J RT	
Measurements	US	Metric
Working height max. ⁽¹⁾	51 ft 6 in	15.86 m
Platform height max.	45 ft 6 in	13.86 m
Horizontal reach max.	24 ft 8 in	7.52 m
Up and over clearance max.	23 ft 7 in	7.14 m
A Platform length	2 ft 6 in	0.76 m
B Platform width	6 ft	1.83 m
C Height - stowed	7 ft	2.13 m
D Length - stowed	21 ft 10 in	6.65 m
E Width	7 ft 6 in	2.29 m
F Wheelbase	6 ft 8 in	2.03 m
G Ground clearance - center	1 ft 3 in	0.37 m

Productivity

Lift capacity max. - unrestricted	500 lb	227 kg
Platform rotation	160°	
Jib length	5 ft	1.52 m
Vertical jib rotation	135°	
Turntable rotation	355°	
Turntable tailswing	0 in	0 cm
Drive speed - stowed ⁽²⁾	3.1 mph	5 km/h
Drive speed - raised	0.68 mph	1.1 km/h
Gradeability - stowed ⁽²⁾	45%	
Tilt sensor activation (front to back/side to side)	2.5° - 4.5° / 4.5°	
Turning radius - inside/outside	5 ft 6 in / 14 ft 9 in	1.68 m / 4.50 m
Tires (solid, non-marking)	315/55 D20	

Power

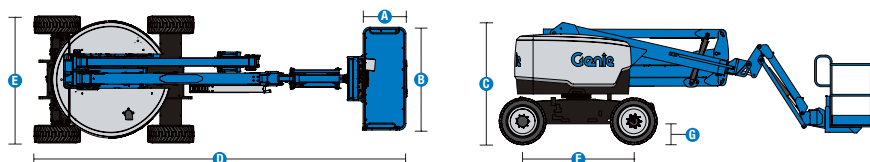
Power	Diesel	
Auxiliary power unit	12V DC	
Hydraulic tank capacity	22 gal	83 L
Fuel tank capacity	17 gal	64 L

Weight⁽³⁾ and Floor Loading⁽⁴⁾

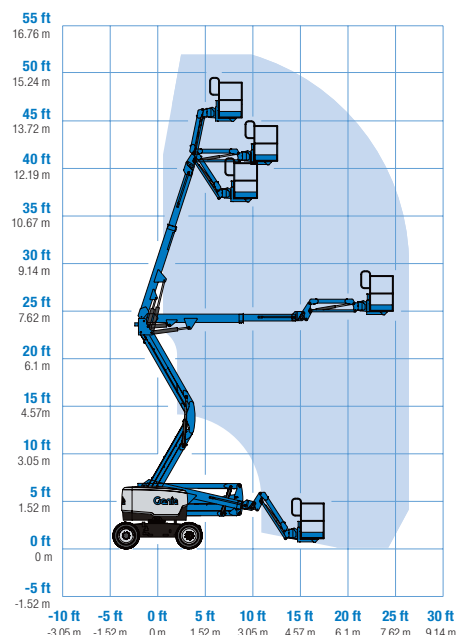
Weight	14,363 lb	6,515 kg
Tire contact pressure	60 psi	414 kPa
Occupied floor pressure (tires)	190 psf	9.12 kPa

Sound and Vibration Levels

Sound Pressure level (ground workstation)	87 dBA	
Sound Pressure level (platform workstation)	82 dBA	
Vibrations	8 ft 2 in/s ²	2.5 m/s ²



Range of motion Z-45/25J RT



(1) The metric equivalent of working height adds 2 m to platform height. The imperial equivalent adds 6 ft to platform height.
 (2) Gradeability applies to driving on slopes and may vary depending on options and machine configurations. See operator's manual for details regarding slope ratings.
 (3) Weight refers to standard configuration and may vary depending on options and/or country standards.
 (4) Floor loading information is approximate and may vary depending on options and machine configurations. It should be used only with adequate safety factors.

Genie® Z[®]-45/25J RT

SKU: Standard Model

- **Z45RT001CG0012:** Z-45/25J RT, 220V, 4WD
- **Z45RT001CG0013:** Z-45/25J RT, 220V, Control box covers, 4WD
- **Z45RT001CG0014:** Z-45/25J RT, 110V, 2.2kW AC Generator, 4WD

* Build to Order

Option availability		S	S+	BtO	
Power	24.8 hp, 18.5 kW, Kubota D1105, Diesel, T4i/T4f, Stage IIIA/IV, CN III	✓	✓	✓	
	Cold weather package		○	○	
Platform	6ft/1.83m dual-entry platform with side swing gate	✓	✓	✓	
	Power to platform, no RCBO	✓	✓	✓	
	Power to platform with RCBO		○	○	
	Air line to platform			○	
	Control box covers		○	○	
	Light Package: drive and work lights			○	
	2.2kW AC Generator, 110V/50Hz			○	
	2.2kW AC Generator, 220V/50Hz			○	
	AC Power cord to platform	✓	✓	✓	
	Drive enable system	✓	✓	✓	
	Horn	✓	✓	✓	
	Lift Guard Contact Alarm	✓	✓	✓	
	Lift Tools Work Tray	✓	✓	✓	
	Platform load sense system	✓	✓	✓	
	Proportional controls	✓	✓	✓	
	Self-leveling platform	✓	✓	✓	
	Thumb rocker steering	✓	✓	✓	
	Travel alarm package: flashing beacons, descent, travel and tilt alarms	✓	✓	✓	
	Chassis	Lift Connect Telematics	✓	✓	✓
		Lift Connect with Access Manager upgrade		○	○
Eco32 biodegradable hydraulic oil			○	○	
Rough terrain, foam-filled tires		✓	✓	✓	
Rough terrain, foam-filled, non-marking tires				○	
Chassis tilt lift function cut-out			○	○	
Hostile environment kit				○	
Hydraulic oil cooler				○	
Active oscillating axle		✓	✓	✓	
Chassis tilt drive function cut-out		✓	✓	✓	
Dual parallelogram lift linkage		✓	✓	✓	
Hour meter		✓	✓	✓	
Positive traction drive		✓	✓	✓	
Zero tail swing	✓	✓	✓		

- S Standard
- S+ Standard +
- BtO Build to Order
- ✓ Standard Features
- Options



Genie Genuine Accessories⁽¹⁾

- Lift Tools Productivity Tools
- Lift Connect Telematics
- Tech Pro Link Handheld Device

(1) More accessories available from Genie Genuine Parts.

Product specifications are subject to change without notice or obligation. Photographs and/or drawings herein are for illustrative purposes only. Refer to the appropriate Operator's Manual for instructions on proper equipment use. Failure to follow instructions in the Operator's Manual may result in serious injury or death. The only warranty applicable to our equipment is the standard written warranty applicable to the particular product and sale and we make no other warranty, express or implied. Products and services listed may be trademarks, service marks or trade names of Terex Corporation and/or their subsidiaries in the USA and many other countries. Terex, Genie, Quality By Design, Xtra Capacity, Lift Power, Lift Guard, Lift Tools, Lift Connect and Tech Pro Link are registered trademarks of Terex Corporation or its subsidiaries.