

# Genie® Z<sup>®</sup>-62/40

## Specifications

Models	Z-62/40	
Measurements	US	Metric
Working height max. <sup>(1)</sup>	67 ft 11 in	20,87 m
Platform height max.	61 ft 11 in	18,87 m
Horizontal reach max.	40 ft 9 in	12,42 m
Below ground reach	8 ft 1 in	2,46 m
Up and over clearance max.	25 ft 7 in	7,8 m
<b>A</b> Platform length (8 ft/6 ft)	3 ft/2 ft 6	0,91 m/0,76 m
<b>B</b> Platform width (8 ft/6 ft)	8 ft/6 ft	2,44 m/1,83 m
<b>C</b> Height - stowed	8 ft 4 in	2,54 m
<b>C</b> Height - storage/transport (jib tucked under)	9 ft 6 in/9 ft 5 in	2,90 m
<b>D</b> Length - stowed	24 ft 10 in	7,57 m
<b>D</b> Length - storage/transport (jib tucked under)	24 ft 5 in/25 ft 5 in	7,44 m/7,75 m
<b>E</b> Width	8 ft 2 in	2,49 m
<b>F</b> Wheelbase	8 ft 2 in	2,49 m
<b>G</b> Ground clearance - center	1 ft 3 in	0,38 m

## Productivity

Lift capacity max. - unrestricted	500 lb	227 kg
Platform rotation	160°	
Jib length	5 ft	1,52 m
Vertical jib rotation	135°	
Turntable rotation	360°	
Turntable tailswing	zero	
Drive speed - stowed <sup>(2)</sup>	3,0 mph	4,8 km/h
Drive speed - raised	0,70 mph	1,1 km/h
Gradeability - stowed <sup>(2)</sup>	30 %	45 %
Tilt sensor activation (front to back/side to side)		4,5° / 4,5°
Turning radius - inside/outside	4 ft 5 in/11 ft 11 in	1,30 m/3,60 m
Tires (foam-filled)		355/55 D625

## Power

Power		Diesel
Auxiliary power unit		12V DC
Hydraulic tank capacity	35 gal	132 L
Fuel tank capacity	36 gal	136 L

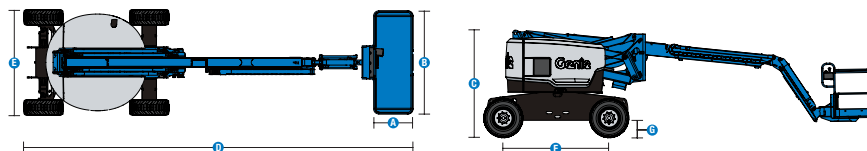
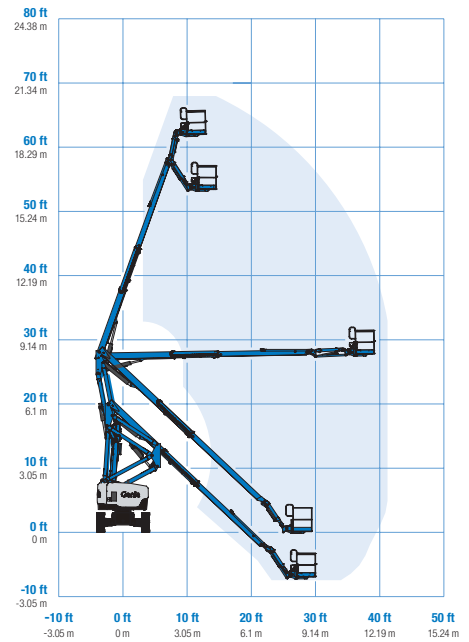
## Weight<sup>(3)</sup> and Floor Loading<sup>(4)</sup>

Weight, 2WS	22 160 lb	10 052 kg
Weight, 4WS	22 665 lb	10 281 kg
Tire contact pressure	70 psi	483 kPa
Track contact pressure	12,5 psi	86 kPa
Occupied floor pressure (tires)	265 psf	12,71 kPa

## Sound and Vibration Levels

Sound Pressure level (ground workstation)		86 dBA
Sound Pressure level (platform workstation)		75 dBA
Vibrations	8 ft 2 in/s <sup>2</sup>	2,5 m/s <sup>2</sup>

## Range of motion Z-62/40



(1) The metric equivalent of working height adds 2 m to platform height. The imperial equivalent adds 6 ft to platform height.

(2) Gradeability applies to driving on slopes and may vary depending on options and machine configurations. See operator's manual for details regarding slope ratings.

(3) Weight refers to standard configuration and may vary depending on options and/or country standards.

(4) Floor loading information is approximate and may vary depending on options and machine configurations. It should be used only with adequate safety factors.

# Genie® Z®-62/40

SKU: Standard Model

• Z6200001UI0028: Z-62/40, 4WD

\* Build to Order

Option availability		S	S+	BtO
Power	48 hp, 35.8 kW, Deutz D2011, Diesel, T4i/Stage IIIA	✓	✓	✓
	Battery Isolation Kit		○	○
	Battery and Starter Isolation Kit		○	○
	Auto engine fault shutdown	✓	✓	✓
Platform	6ft/1,83m dual-entry platform with side swing gate			○
	8ft/2,44m tri-entry platform with side swing gate	✓	✓	✓
	Thumb rocker steering	✓	✓	✓
	240Volt Power To Platform Kit		○	○
	Airline to Platform		○	○
	Control box covers (Ground and Platform)			○
	Half Mesh Aluminium 6FT BI-ENTRY Platform Kit			○
	Half Mesh Aluminium 8FT TRI-ENTRY Platform Kit			○
	Harness Container Double		○	○
	Harness Container Single Kit		○	○
	Harness Fall Arrest Lanyard		○	○
	LED Flashing Beacon		○	○
	Light Package: drive and work lights			○
	Operator Protective Structure		○	○
	Platform Worklights		○	○
	White Noise Alarm Kit		○	○
	Lift Power 7kW Generator Welder Ready			○
	5ft/1,52m Jib	✓	✓	✓
	AC Power cord to platform	✓	✓	✓
	Drive enable system	✓	✓	✓
	Horn	✓	✓	✓
	Lift Guard Contact Alarm	✓	✓	✓
	Lift Tools Work Tray	✓	✓	✓
	Platform Control Box Cover Kit	✓	✓	✓
	Platform level cutout	✓	✓	✓
	Platform load sense system	✓	✓	✓
	Proportional controls	✓	✓	✓
Self-leveling platform	✓	✓	✓	
Travel alarm package: flashing beacons, descent, travel and tilt alarms	✓	✓	✓	
Chassis	Telematics-Ready	✓	✓	✓
	Lift Connect Telematics		○	○
	Lift Connect with Access Manager upgrade		○	○
	Rough terrain, foam-filled, non-marking tyres	✓	○	✓
	TraX track drive system			○
	Rough terrain, foam-filled tyres		○	○
	2 wheel steering	✓	✓	✓
	4 wheel steering			○
	Jump Start Receptacle Kit		○	○
	Drive Lights		○	○
	Fire Extinguisher 4.5KG 4A:80B:E		○	○
	Wheel Chock Kit		○	○
	Wheel Nut Indicator		○	○
	2 speed wheel motors	✓	✓	✓
	Active oscillating axle	✓	✓	✓
Chassis tilt drive function cut-out	✓	✓	✓	
Dual parallelogram lift linkage	✓	✓	✓	
Hour meter	✓	✓	✓	
Hydraulic oil cooler	✓	✓	✓	
Tech Pro Link connector	✓	✓	✓	

- S Standard
- S+ Standard +
- BtO Build to Order
- ✓ Standard Features
- Options



Zero Tailswing



Rugged Terrainability



Genie FastMast



### Genie Genuine Accessories<sup>(1)</sup>

- Lift Tools Productivity Tools
- Lift Connect Telematics
- Tech Pro Link Handheld Device

(1) More accessories available from Genie Genuine Parts.

Product specifications are subject to change without notice or obligation. Photographs and/or drawings herein are for illustrative purposes only. Refer to the appropriate Operator's Manual for instructions on proper equipment use. Failure to follow instructions in the Operator's Manual may result in serious injury or death. The only warranty applicable to our equipment is the standard written warranty applicable to the particular product and sale and we make no other warranty, express or implied. Products and services listed may be trademarks, service marks or trade names of Terex Corporation and/or their subsidiaries in the USA and many other countries. Terex, Genie, Quality By Design, Xtra Capacity, Lift Power, Lift Guard, Lift Tools, Lift Connect and Tech Pro Link are registered trademarks of Terex Corporation or its subsidiaries.