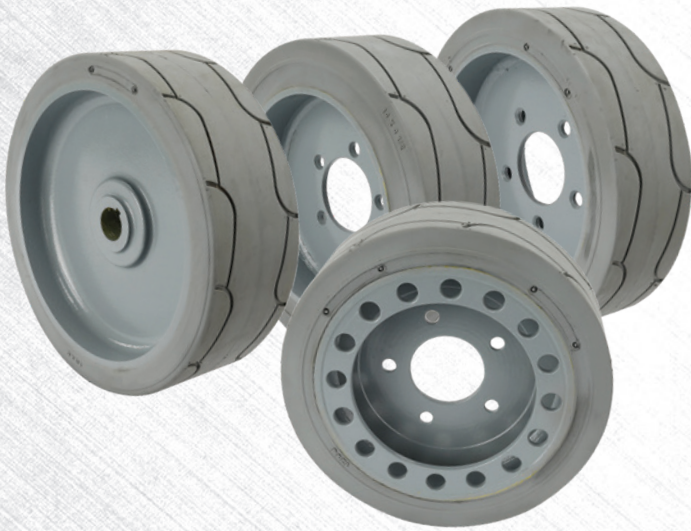


CONVENIENT ONE-STOP-SHOP

ALL-MAKES SCISSOR LIFT TIRES NOW AVAILABLE FROM GENIE®*



- Competitively priced aftermarket scissor lift tires from JLG, Skyjack and Genie
- Free freight on qualifying orders
- In stock parts ship out in 2 business days from Washington State

PART NUMBER	COMPATIBLE OEM	COMPATIBLE OEM P/N	MACHINE MODELS	DESCRIPTION
2915012JG	JLG	2915012	1230ES, 1930ES, 2646ES, 1930E2, 1932E2	Wheel/ Tire Assy, Non-Marking Solid ,323
2915013JG	JLG	2915013	2030ES, 2630ES, 2646ES, 3246ES	Wheel/ Tire Assy, Non-Marking Solid ,406
4520177JG	JLG	4520177	1532E-1932E, 1532E3-1932E3	Wheel/ Tire Assy, Non-Marking Solid, 14"
4520174JG	JLG	4520176, 4520174	2033E, 2046E, 2658E; 2032E2, 2632E2, 2646E2, 3246E2/ES/RS; 2033E3/2046E3/2646E3/2658E3.	Wheel/ Tire Assy, Non-Marking Solid, 16"
158436SJ	SKYJACK	108020, 158436, 158436 Front	SJ111-3015/3215/3219; SJ-3215/3219; SJM-3015/3215/3219	Wheel/ Tire Assy, Non-Marking Solid, No Brake, 12"
158437SJ	SKYJACK	108022, 158437, 158439 Rear	SJ111-3015/3215/3219; SJ-3215/3219; SJM-3015/3215/3219	Wheel/ Tire Assy, Non-Marking Solid, W Brake, 12"
125785SJ	SKYJACK	125785, 132285, 161891 Front	SJ111-3220, 3226, 4626, 4623	Wheel/ Tire Assy, Non-Marking Solid, No Brake, 16"
125786SJ	SKYJACK	125786, 132284, 161890 Rear	SJ111-3220, 3226, 4626, 4623	Wheel/ Tire Assy, Non-Marking Solid, W Brake, 16"
57998GN	GENIE	57998GT	GR™, QS™	Wheel/ Tire Assy, Non-Marking Solid, 10"
105122GN	GENIE	105122GT	Genie GS™-1530, GS-1532, GS-1930, GS-1932	Wheel/ Tire Assy, Non-Marking Solid, 12"
105454GN	GENIE	105454GT	Genie GS-2032, GS-2046, GS-2632, GS-2646, GS-3232, GS-3246, GS-4047	Wheel/ Tire Assy, Non-Marking Solid, 15"
94908GN	GENIE	94908GT	Genie Z®-30, Z-34	Wheel/ Tire Assy, Non-Marking Solid, 22"
94909GN	GENIE	94909GT	Genie Z-30, Z-34	Wheel/ Tire Assy, Non-Marking Solid, 22"

HOW TO ORDER:

- > **ECOMMERCE:** GoGenieLift.com and/or SmartEquip
- > **EMAIL:** AWP.PartsSalesPO@TEREX.COM
- > **PHONE:** 1-877-367-5606

*USA only. Substitutable for the OEM part numbers. Tread pattern may vary.