

Qingdao Beihai Shipyard – Deployed Genie HD machines for harsh shipyard environment

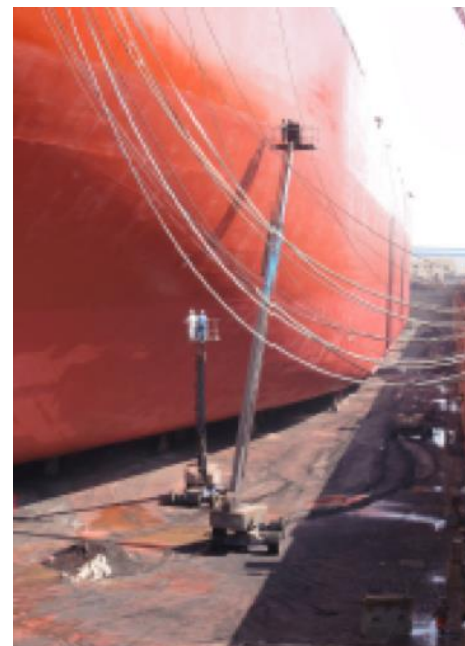
Scaffolding, cranes and trucks failed to be robust enough to withstand harsh shipyard environments. Genie HD machines are purpose-built for shipyard use and were the first MEWP to be adopted by China’s shipbuilding companies, helping to drive rapid industry growth.

Project: Repair & Maintenance 5,000 to 18,000 ton vessels | Location: China

 <p>4 Shipyard Features to Protect Components</p>	 <p>3 Productivity Features for Better Performance</p>	 <p>Fire Extinguisher Carriage Available</p>
---	--	---





	SCAFFOLDING	VS	TRUCK MOUNTED	VS	GENIE SOLUTION
LIFTING HUGE MATERIALS	Impossible. Dangerous		Limited capacity		Easily lifts workers and up to 340 kg
IMPACT FROM HARSH ENVIRONMENT	<ul style="list-style-type: none"> Easily rusted Unsafe to use Damaged the machine 		<ul style="list-style-type: none"> Body and components easily rusted Unsafe to use Damaged the machine 		Shipyard features to prolong the lifespan of machines and enhance safety
TIME TAKEN TO COMPLETE JOB	Long		Long		Short

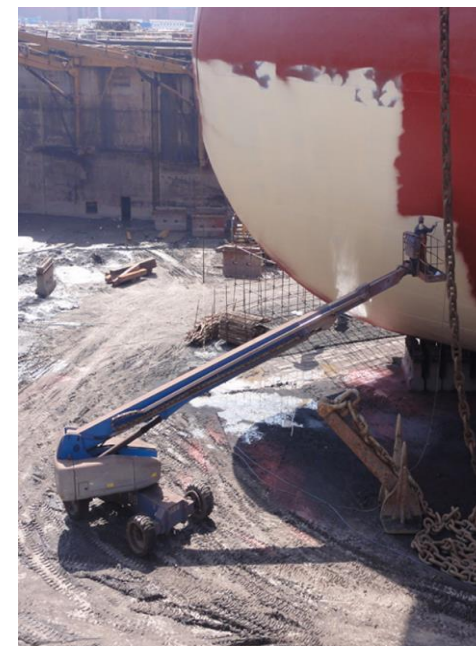
*Some models may no longer be in production or may have been replaced by newer machines.



Genie HD machines have several features to withstand the shipyard environment

Genie® S®-120 HD Boom Lift Basic Specifications

			
38.58 m	22.26 m	1.98m	340 kg



Genie HD machines provide fast and safe solution for all shipyard job applications

Genie Machines* Involved

- Genie S-100 HD boom
- Genie S-120 HD boom