

MRT Track Extension – Improved workers’ safety on uneven surfaces and narrow, inaccessible areas

Uneven rough terrain and narrow access under MRT tracks caused major worker safety issues. 120 Genie machines were deployed, elevating workers to reach narrow, inaccessible areas with complete confidence and safety.

Project: M&E | Location: Singapore | Time to Complete: 8 Months

 <p>Capable of Deployment on Uneven Terrain</p>	 <p>X Chassis Provides Stability and Safety</p>	 <p>Small Footprint</p>
--	--	---

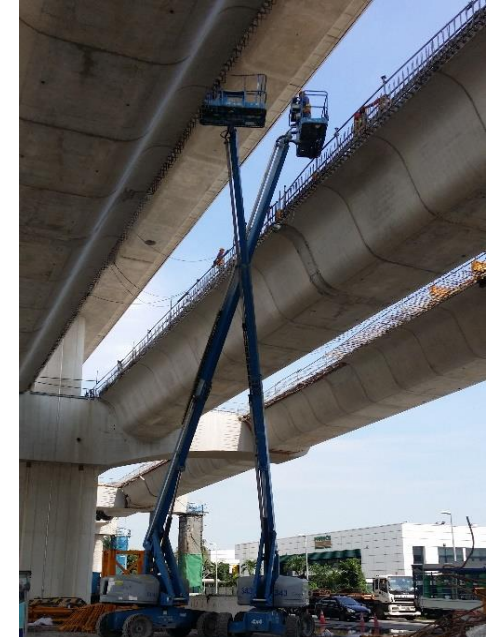
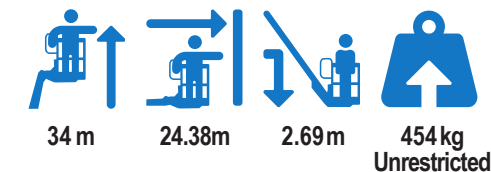
	GENIE SOLUTION
UNEVEN AND ROUGH TERRAIN	Active oscillating axle - Helps maintain traction on rough terrain X-Chassis - For machine stability
NARROW WORKING SPACE	Small footprint - Made it possible to operate in tight spaces
PRODUCTIVITY	Drivable at height Up to 50% gradeability for superior terrainability

*Some models may no longer be in production or may have been replaced by newer machines.



Small footprint with superior lifting versatility in hard-to-reach areas

Genie® S™-105 XC Telescopic Boom Lift Basic Specifications



Rigorous jobsite conditions

Genie Machines* Involved: 120

- Genie GS™ -1930 Scissor Lift
- Genie GS-2646 Scissor Lift
- Genie GS-5390 Scissor Lift
- Genie Z®-80/60 Boom Lift
- Genie Z-34/22 N Boom Lift
- Genie S®-105 Boom Lift