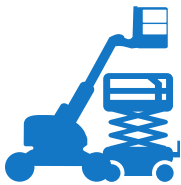
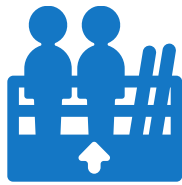



Novena church - Quick & safe lifting of heavy marble slabs; saved 50% time

Lifting of heavy marble slabs (each slab is 50 kg) was required for cladding work. Dangerous with only scaffolds for support. 12 Genie® machines replaced 70% of scaffolds. Safe lifting of slabs was expedited, reducing project time from 12 months to 6 months.

Project: Refurbishment | Location: Singapore | Time to Complete: 6 Months

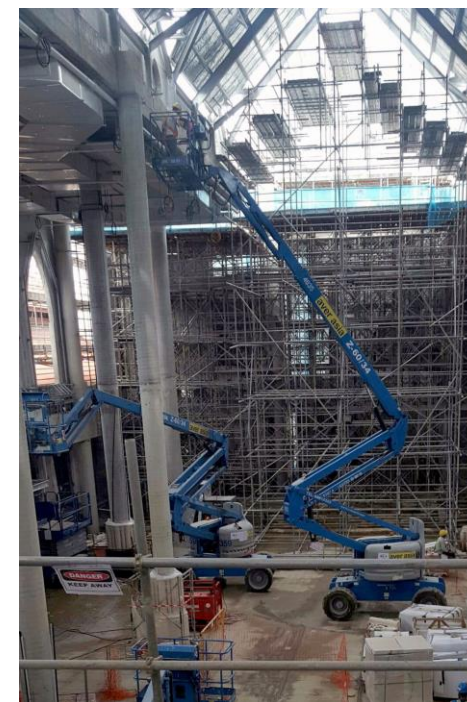
 <p>70% Scaffolds Replaced by Genie Machines</p>	 <p>Lifting 2 Workers + 50 kg Marble Slabs</p>	 <p>Less than a Minute to Reach Maximum Height</p>
--	--	---

	SCAFFOLDING	VS	GENIE SOLUTION
LIFTING MARBLE SLABS	Not possible - Dangerous		Possible - Safe
COST: MANPOWER	High - Many workers required to setup and tear down		Low - No manpower required to setup and tear down
COST: NUMBER OF UNITS REQUIRED	High - Many towers		Low - Only 12 machines
PRODUCTIVITY	Slow - Require climbing		Fast - <1 minute to reach full height

*Some models may no longer be in production or may have been replaced by newer machines.







BEFORE – With 100% Scaffolds



AFTER – Replaced with 12 Genie machines

Genie® Z®-60/34 Articulated Boom Lift
Basic Specifications

			
20.39 m	11.05 m	8.23 m	227 kg

Genie Machines* Involved: 12

- 2 Genie Z®-60 Boom Lifts
- 5 Genie GS™-4069 RT Scissor Lifts
- 2 Genie GS™-1930 Scissor Lifts
- 2 Genie Z™-45/25 RT Boom Lifts
- 1 Genie S®-45 Boom Lift