

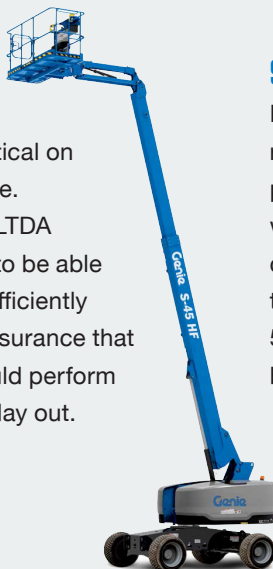
AMAZON DISTRIBUTION CENTER CONSTRUCTION COMPLETED WITH GENIE MEWPS



Amazon distribution centers are massive — averaging around 800,000 sq ft / 74,322 m. Contractor Diase Construções LTDA was selected to help build a new Amazon facility in São João de Meriti, Brazil, and needed aerial equipment to help them get the job done.

CHALLENGE

Safety, productivity and uptime were critical on a project of this scale. Diase Construções LTDA needed their crews to be able to work safely and efficiently at height with the assurance that their equipment would perform reliably, day in and day out.



SOLUTION

Diase Construções LTDA turned to rental company Orguel, a longtime Genie® partner, to supply mobile elevating work platforms (MEWPs) to aid in the construction. Among the machines they used were numerous Genie 19 ft/ 5.8 m scissor lifts and 45 ft/ 13.7 m boom lifts.

RESULTS

Thanks to the reliability of the Genie boom and scissor lifts, the project in São João de Meriti was completed as planned. The new facility is important to the local population — in addition to being a large logistics distribution center for various items such as appliances, pharmaceuticals and electronics, it also provides new job opportunities for local residents.